



- ✓ **Results in 30 Seconds**
- ✓ **Transfer Existing Calibrations**
- ✓ **Expert Calibration Handling**
- ✓ **Flexible Data Handling**

Next Generation NIR Analyzer

The Phoenix 6000 NIR Analyzer is an ideal solution for university and research labs that need highly accurate and rapid results for a variety of samples.

The Phoenix 6000 employs a scanning monochromator, which is the NIR technology most trusted by Agriculture and Food companies and labs around the world.

Calibration databases developed on other NIR platforms (Foss, Unity, etc.) can be easily transferred to the Phoenix 6000 and reliable results can be generated immediately.

The software is intuitively designed and easy to use.

- 30 second analysis
- Transfer your existing calibrations
- 600-2500 nm wavelength range
- Multiple calibration options
- Integrated check standards
- Modern software features
- Fully automated
- User friendly software
- IP62 rated

EXPLORE THE PHOENIX

Easy to Use Interface

- 12.3" Microsoft Surface Touchscreen
- Simple tab design
- Fast access to results
- Flexible data handling

All Phoenix instruments are manufactured at Blue Sun Scientific's headquarters in Jessup, Maryland.



NIR Monochromator

The most trusted NIR technology used by the food and agriculture industries

Innovative Sample Car

- Scans large and small cups
- Scans entire sample cup
- Integrated standards



Easy to Access Lamp

The 5k-10k hour lamp can be replaced in under 5 minutes with no special tools needed.

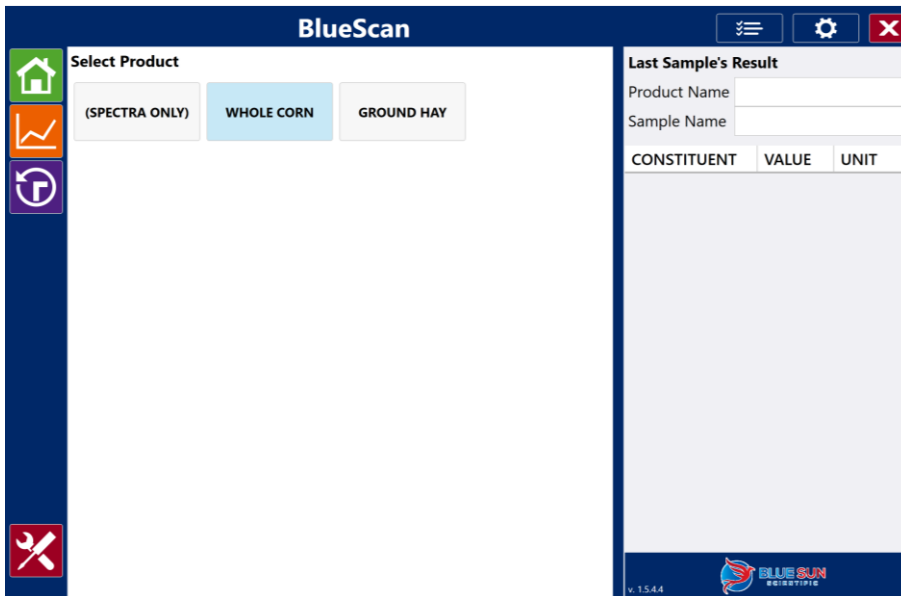
Fully Sealed

- Rugged and robust
- Ideal for in-lab or at-line analysis

HIGHLY ACCURATE, RUGGED AND EASY TO MAINTAIN

Introducing BlueScan

Designed for Ease of Use



The Phoenix 6000 is powered by BlueScan software. This custom designed software is packed with features making it ideal for research and quality analysis.

BlueScan's tab design ensures your information is just a click away. You can easily view results, historical data, spectra, generate reports and run diagnostics with the press of a button.

Keep Your Database

The Phoenix 6000 NIR Analyzer can be programmed with calibrations for many industries.

If you have existing calibrations that you have built and would like to keep, you can with the Phoenix 6000.

The Phoenix 6000 is backwards compatible to accommodate databases from many major NIR manufacturers, including FOSS™, and Unity Scientific™.

University Partners

We value our university partners' drive to innovate and improve our understanding of the many complex systems all around us.

We have created a complete program to ensure their success with the Phoenix 6000 NIR analyzer.






- ✓ Research grade NIR analyzer
- ✓ Special University Pricing
- ✓ An assortment of sample accessories
- ✓ Calibration Development Software and training

Specifications

Hardware	
Dimensions	14.0 in x 15.0 in x 20.75 in ; 356 mm x 381 mm x 527 mm (LxWxH)
Weight	34 lbs ; 15.4 kg
IP Rating	62
Power Connection	Via external power supply; Input:100-240VAC, 50/60Hz, 65watt Output: 24VDC, 2.7A.
Light Source	Tungsten Quartz Halogen Lamp, MTBF > 5k-10k hours
Measurement Mode	Reflectance or Transflectance
Detector	2 High Performance InGaAs extended ranged detectors
Wavelength Selection	Scanning diffraction grating monochromator with nominal bandwidth of 10nm (FWHH). Configurable Data presented in 0.5nm, 1nm or 2nm increments
Performance	
Wavelength Range	600-2500 nm
Number of Data Points	Up to 3800
Analysis Time	10-60 seconds (24 scans / sample = 32 seconds)
Wavelength Reproducibility	< 0.02 nm (based on Blue Sun Scientific specific diagnostic test)
Wavelength Accuracy	< 0.3 nm for Blue Sun selected published peak positions of NIST SRM 1920a standard
Photometric Noise	< 15 μ Au in standard range
User Interface	
Display	12.3" Microsoft Surface Pro Touch Screen running Windows 10
Data Export Options	LIMS, Modbus, Excel
Installation Requirements	
Ambient Temperature	10-40°C
Storage Temperature	-20-40°C
Ambient Humidity	< 85% RH
Mechanical Environment	Stationary during use
EMC environment	Laboratory use, Industry requirements

Blue Sun Guarantee

Every Phoenix 6000 is backed by our industry leading warranty program which guarantees you receive fast, reliable support from industry experts you can trust at a fair market price. It includes **free**:

-  Phone Support
-  Remote Support
-  Software Upgrades
-  Calibration Development (1 Year)
-  Warranty on Parts (1 Year)